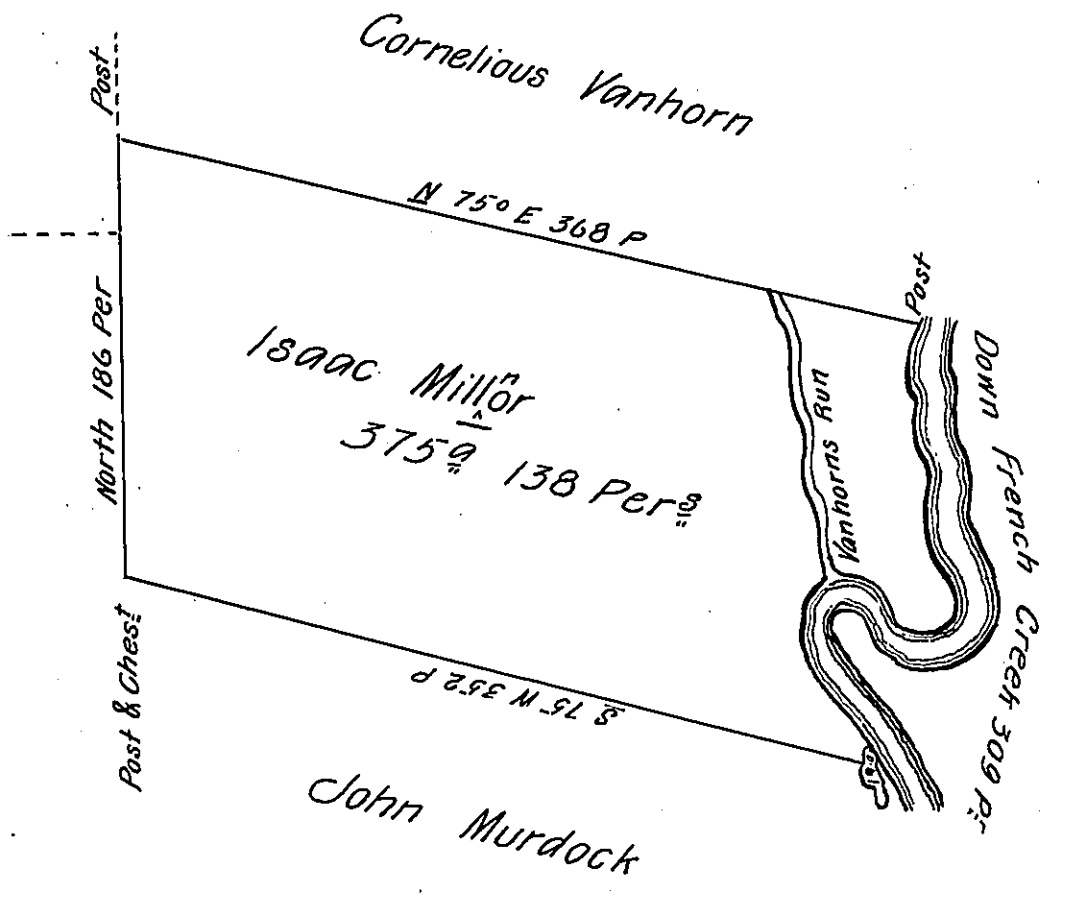


FORM No. 1.

River Courses

Post	S	6	W	9
	S	1°	E	29
	S	7°	E	65
	S	29°	E	28
	S	50	W	11
	N	48	W	46
	S	85	W	20
	S	43	W	18
	S	8°	E	17
	S	24°	E	18
	S	42°	E	41
	S	12°	E	7
				<u>309 Perches</u>



Situate on and adjoining (obl) West side of French Creek in Allegheny  
 County containing 375 acres and 138 perches and allowance of Six P. Cent  
 for Roads &c. Surveyed the 2<sup>d</sup> day of June 1794. In pursuance of a Warrant  
 dated the 13<sup>th</sup> day of April 1792.

Wm Power Dy. Sr

To Daniel Brodhead Esq<sup>r</sup>  
 Surveyor General.

IN TESTIMONY that the above is a copy of the original remaining on file in  
 the Department of Internal Affairs of Pennsylvania, made  
 conformably to an Act of Assembly approved the 16th day of  
 February, 1833, I have hereunto set my Hand and caused  
 the Seal of said Department to be affixed at Harrisburg,  
 this eighth day of December 1905.

*George D. Brown*  
 Secretary of Internal Affairs.